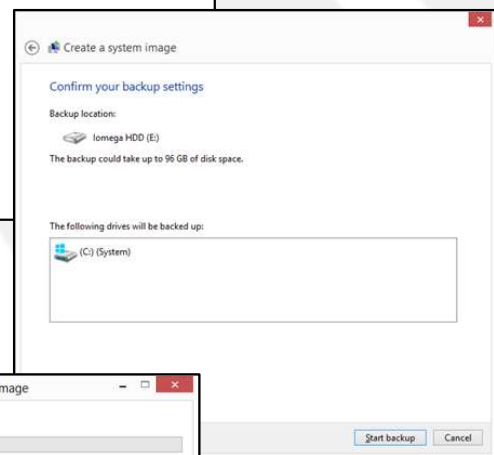
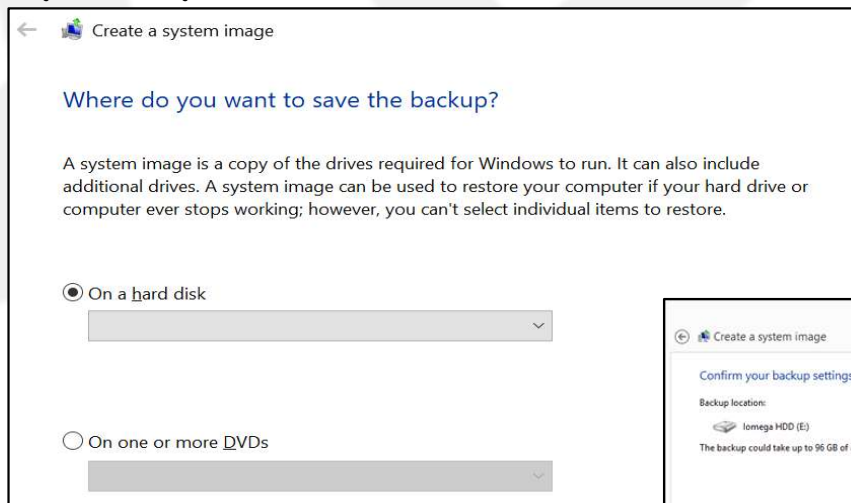
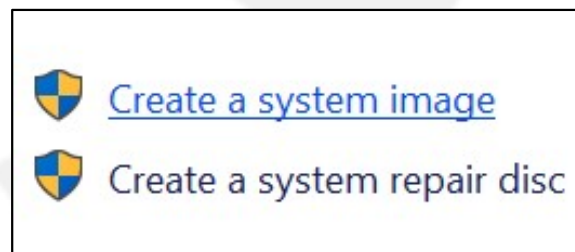
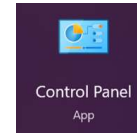


3: How to create a Disk Image

- Search and go to the Control Panel
- Select System and Security
- Select Back up and Restore (Windows 7)
- Click on Create a System Image
- It asks where you wish to create the System image
NB: You will need an external memory stick/hard drive as big as your system disk (C:) to do this.



- Select location and Confirm



4: How to create a Disk Image

A disk image is an exact copy of a certain disk. Creating a disk image in Windows 10 or Windows 11 refers to **making a full backup of the hard drive with Windows installed**. You can keep this disk image as a means of data and disaster recovery, or use it for disk migration. It is an ultra backup, not just of your files but the system as well.

For example, with a disk image on external drive or cloud, you can **restore Windows 10 PC to an earlier state** even after a severe system failure. And when you want to replace the hard disk (such as upgrading HDD to SSD), you can directly restore the disk image to the new drive without reinstallation and data transferring.

Usually the disk image is that of the C: Drive containing the Windows operating system, but any drive can be imaged.

IMPORTANT NOTE:

With a disk image you can resurrect completely a computer that's hard drive has crashed - **ON THE SAME HARDWARE**. Not necessarily on a different (new) computer

